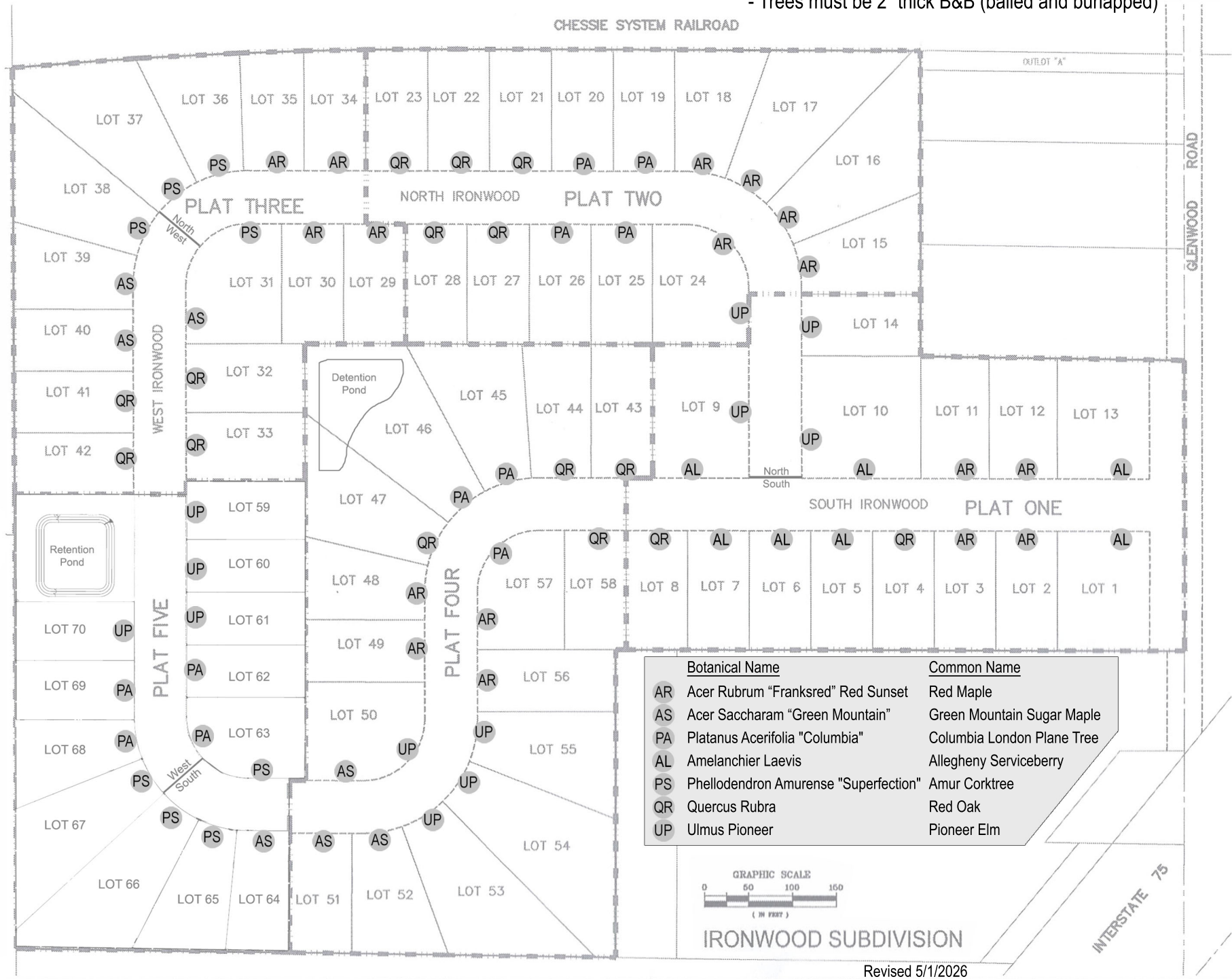
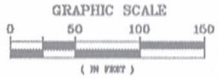


Treescape Plan for Ironwood Subdivision

- Trees should be centered between sidewalk and street
- Trees must be planted within 1 year of occupancy
- Trees must be 2" thick B&B (balled and burlapped)



Botanical Name	Common Name
AR Acer Rubrum "Franksred" Red Sunset	Red Maple
AS Acer Saccharum "Green Mountain"	Green Mountain Sugar Maple
PA Platanus Acerifolia "Columbia"	Columbia London Plane Tree
AL Amelanchier Laevis	Allegheny Serviceberry
PS Phellodendron Amurense "Superfection"	Amur Corktree
QR Quercus Rubra	Red Oak
UP Ulmus Pioneer	Pioneer Elm



IRONWOOD SUBDIVISION

Revised 5/1/2026